

Growing Colorado

Population and Economic Transitions for Colorado

Partners in the Outdoors
2017

Elizabeth Garner

State Demography Office

Colorado Department of Local Affairs

Demography.dola.colorado.gov



COLORADO
Department of Local Affairs

Key Transitions

- **I**ncome
- **M**igration
- **A**ging
- **G**rowing and slowing
- **E**thnicity/race.



Big Picture - 2015-2016 Pop Change

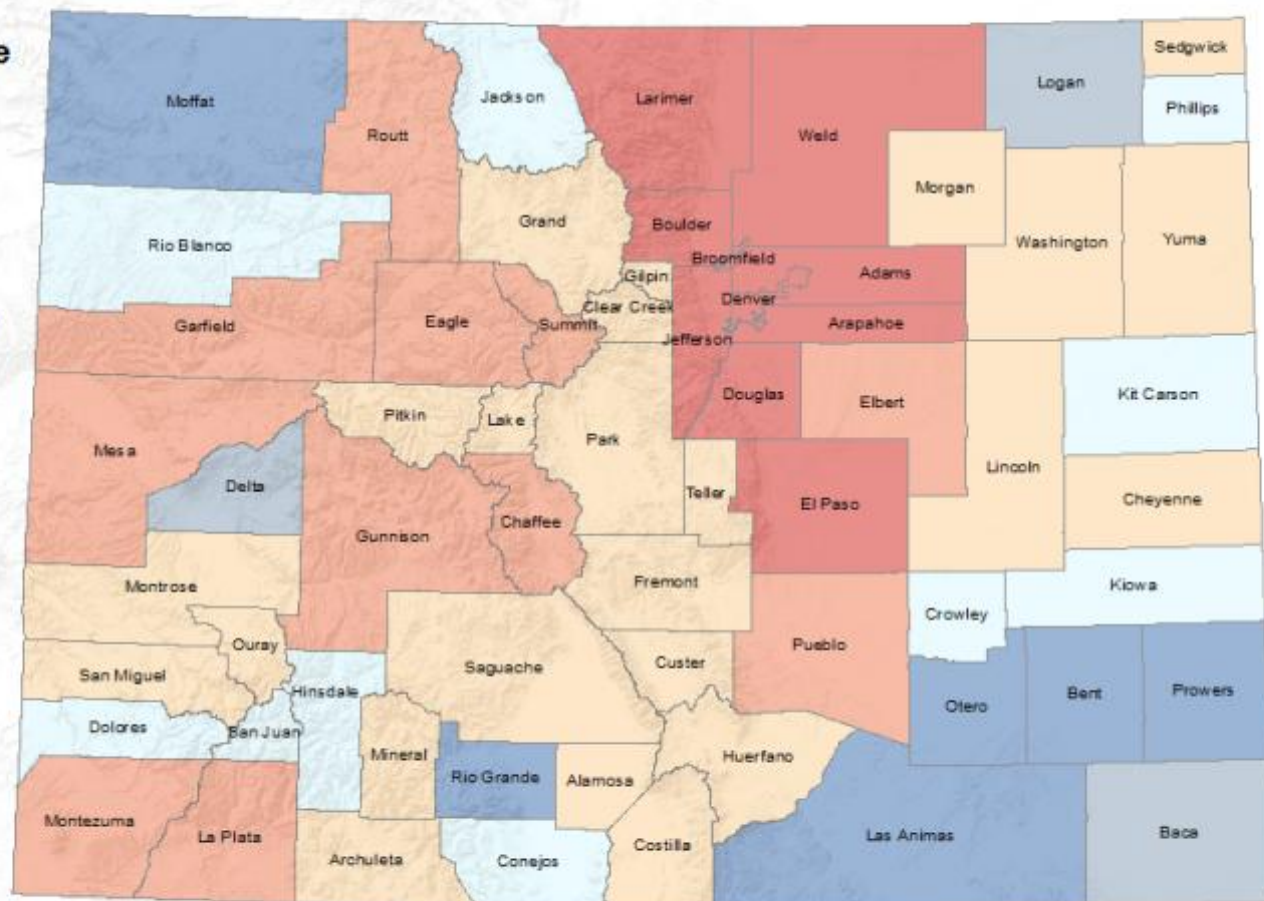
- US - 323.1 million, + 2.2 million or .7%
- Colorado - 5,540,500
- Ranked 7th fastest 1.7% - UT, NV, ID, FL, WA, OR
- 8th absolute growth 91,700 - TX, FL, CA, WA, AZ, NC, GA
- Range in Colorado
 - +14,000
 - -50



Colorado: Total Population Change 2010 - 2016

Population Change

2010 to 2016



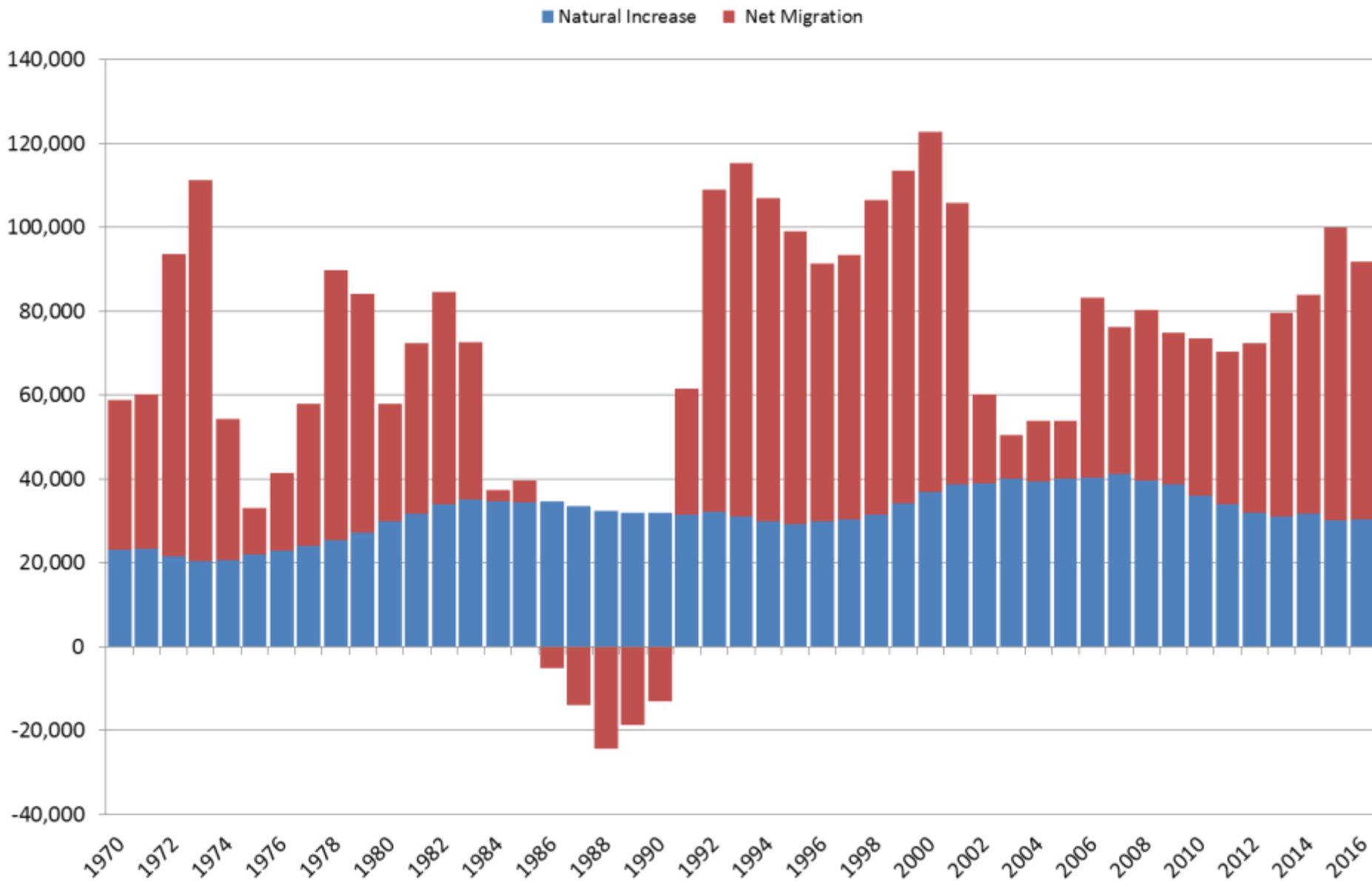
Colorado State Demography Office, 03/31/2017

Sources: Esri, USGS, NOAA



COLORADO
Department of Local Affairs

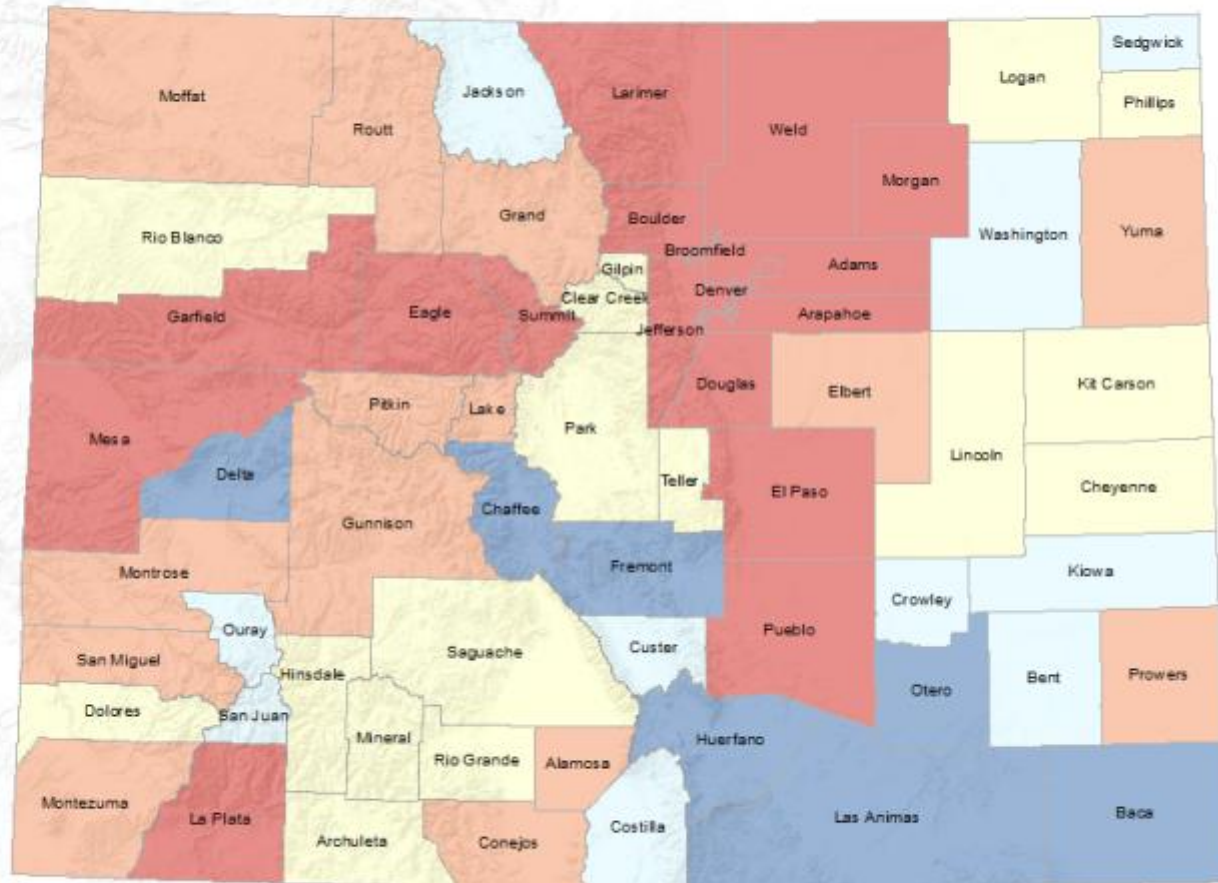
Components of Colorado Population Change 1970-2016



Colorado: Natural Increase 2010 - 2016

Natural Increase

2010 to 2016



Colorado State Demography Office, 03/31/2017

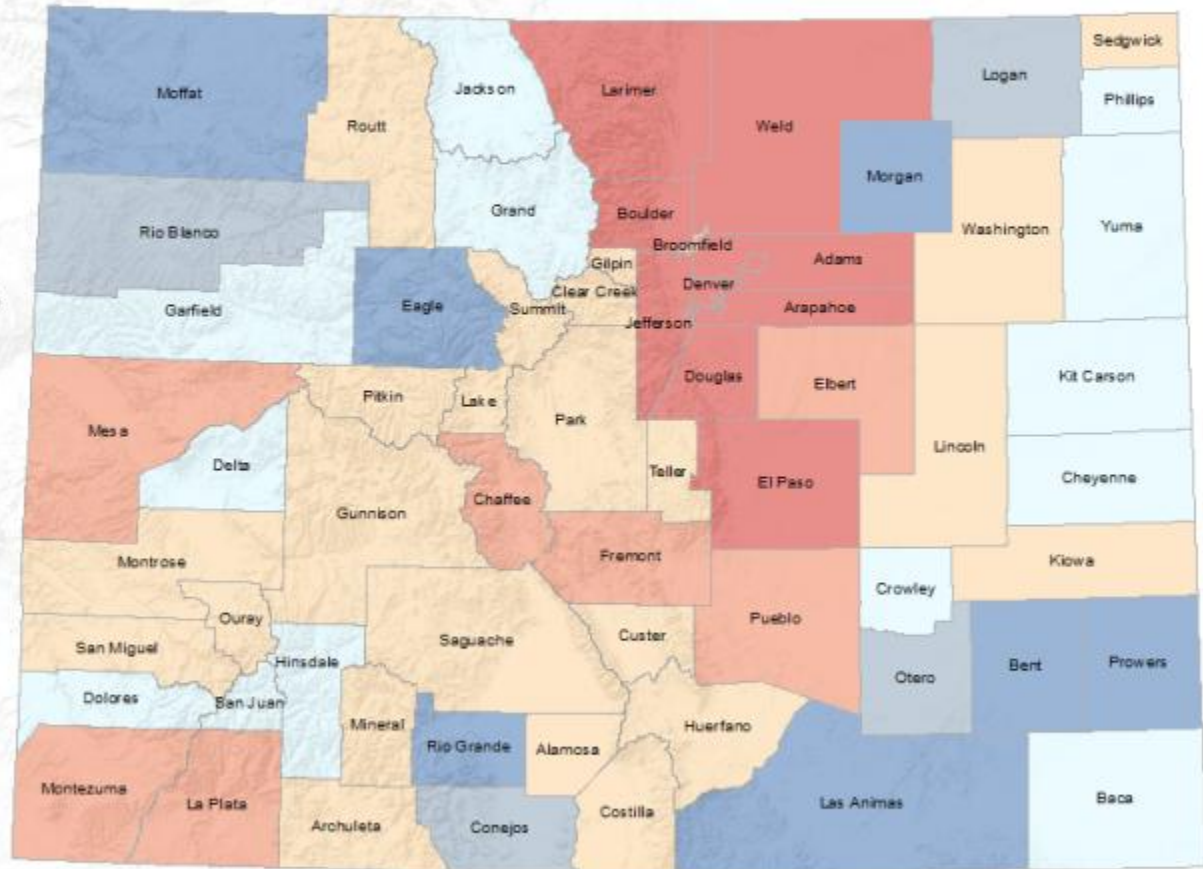
Sources: Esri, USGS, NOAA



COLORADO
Department of Local Affairs

Colorado: Net Migration 2010 - 2016

Net Migration 2010 to 2016



Colorado State Demography Office, 03/31/2017

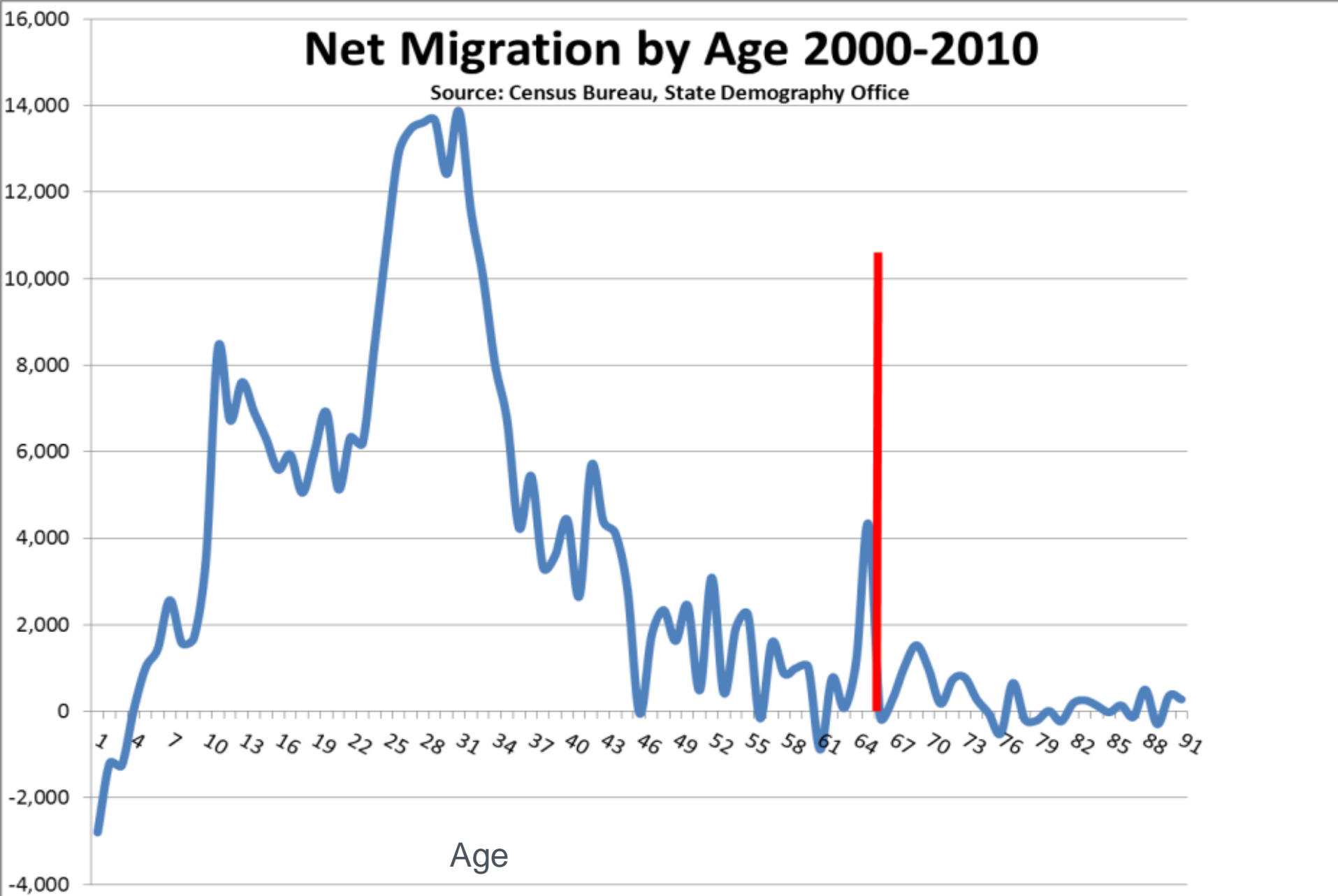
Sources: Esri, USGS, NOAA



COLORADO
Department of Local Affairs

Net Migration by Age 2000-2010

Source: Census Bureau, State Demography Office



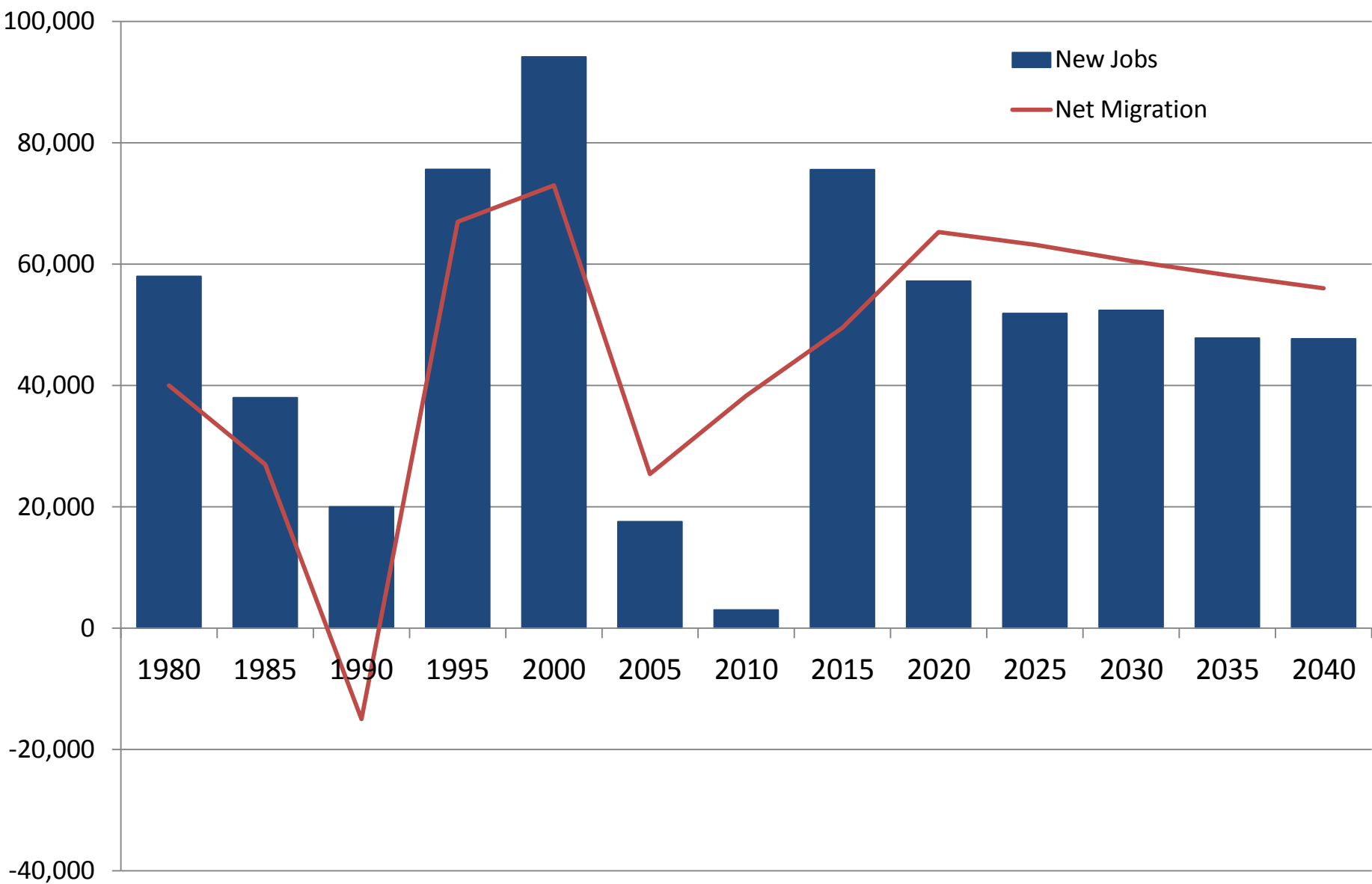
Colorado State to State Migration

2015 State to State Migration

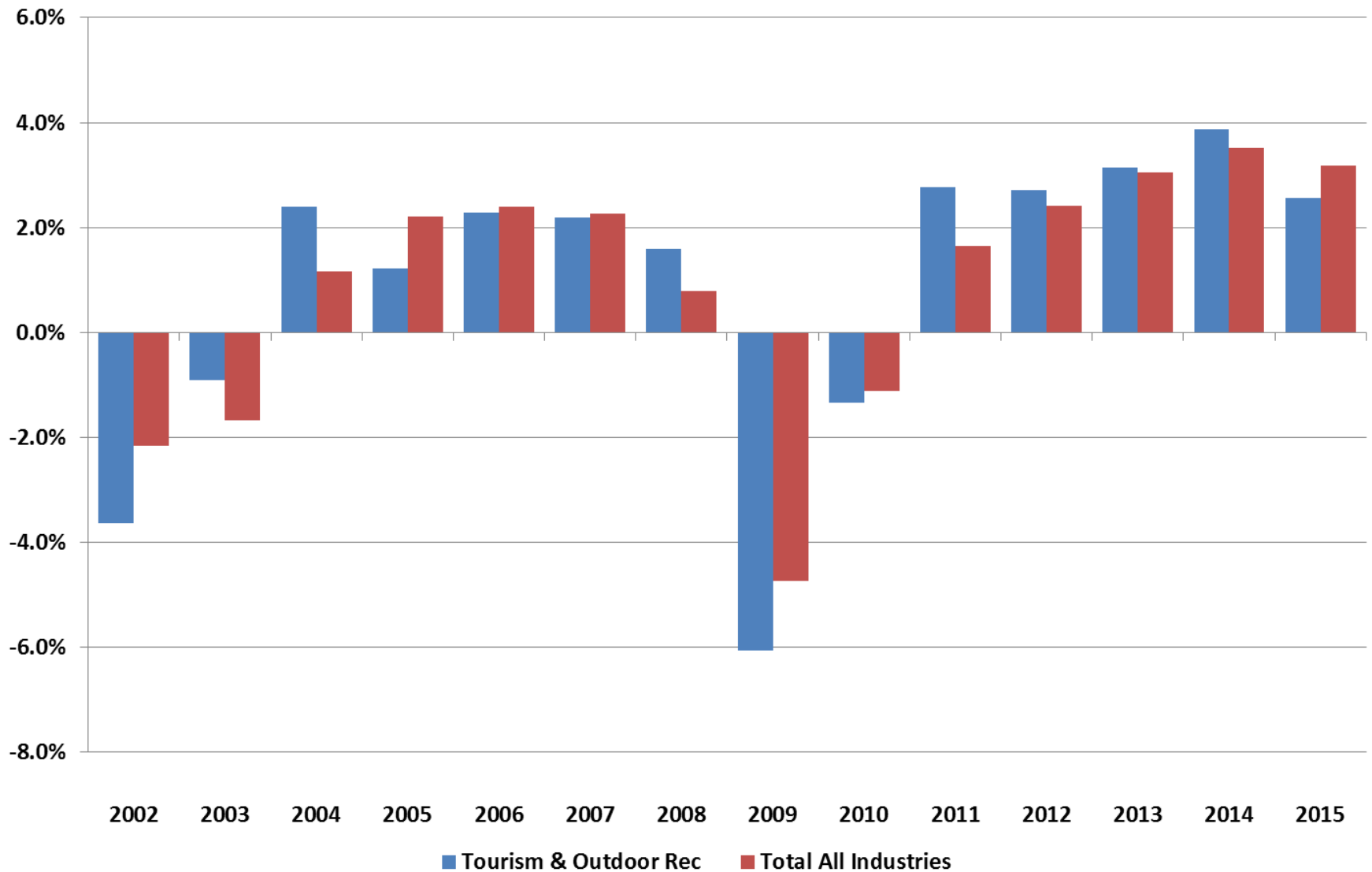
In	Out	Net
California	Texas	California
Texas	California	Illinois
Florida	Arizona	Wisconsin
Illinois	Florida	Virginia
Arizona	Wyoming	Florida



Colorado New Jobs and Net Migration



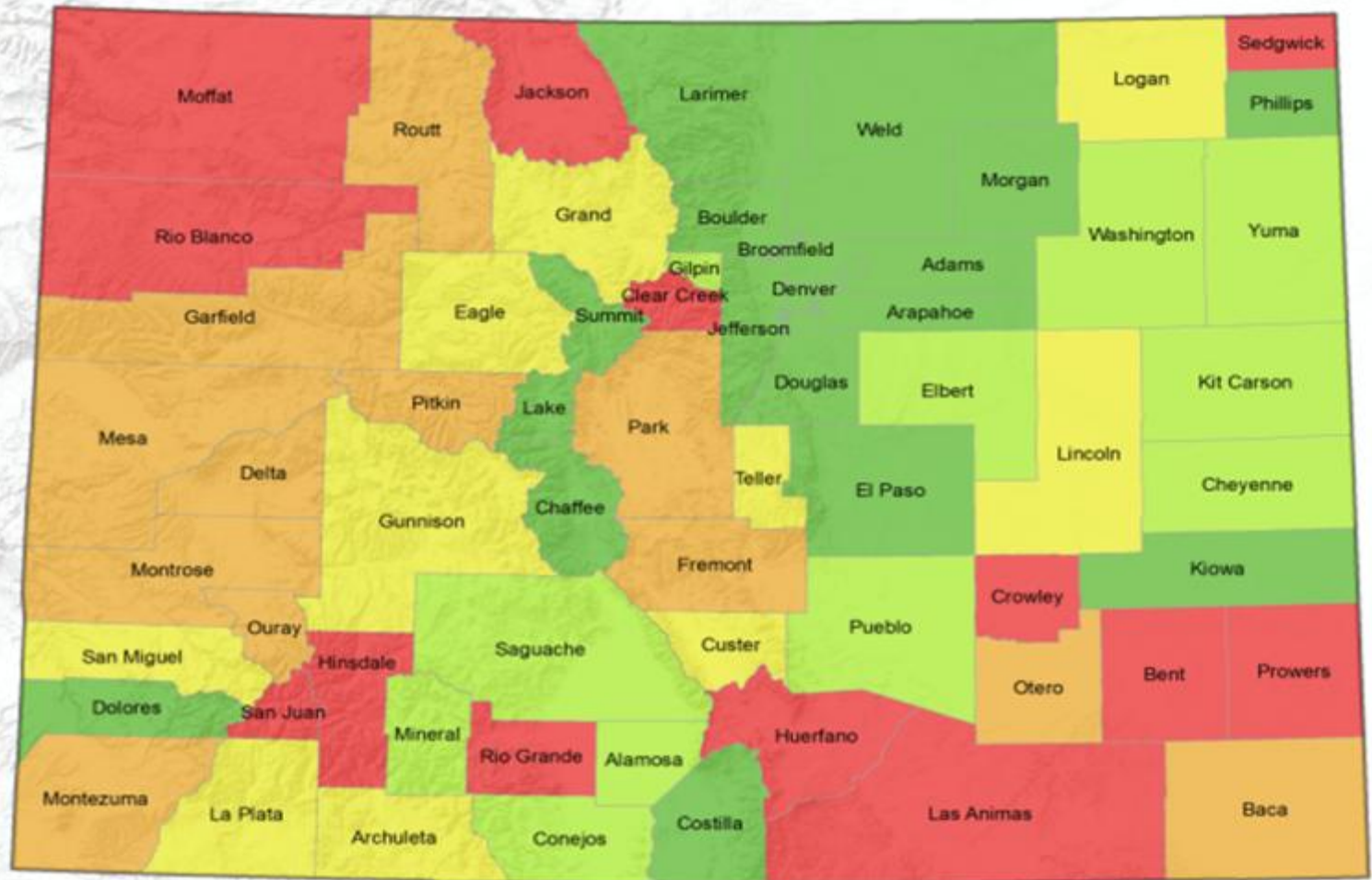
Over-the-year Employment Change - Tourism & Outdoor Rec vs. All Industries



2015 Jobs Relative to Pre-Recession Peak

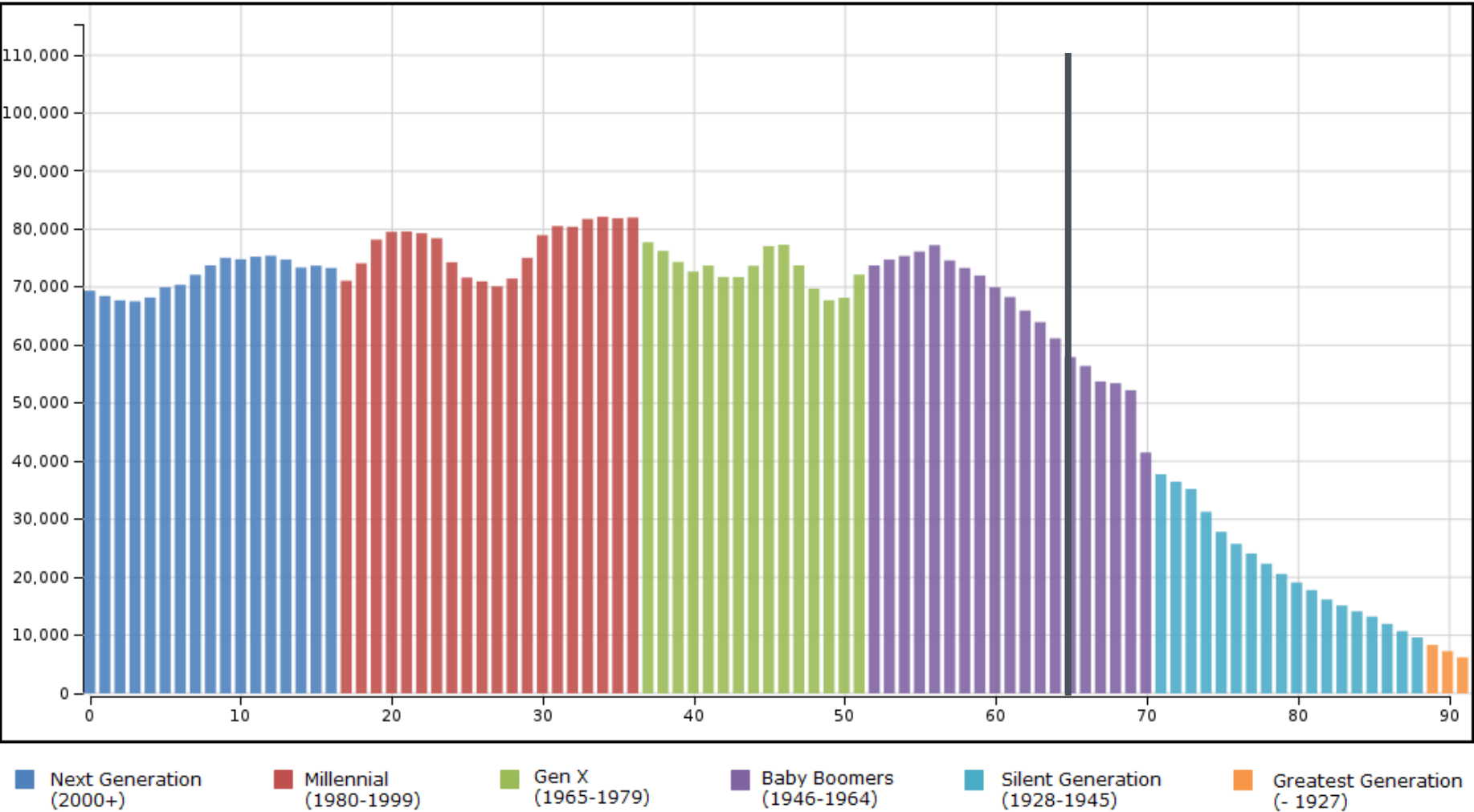
Recession Years: 2007-2009

2015 Jobs vs Pre-Recession Peak



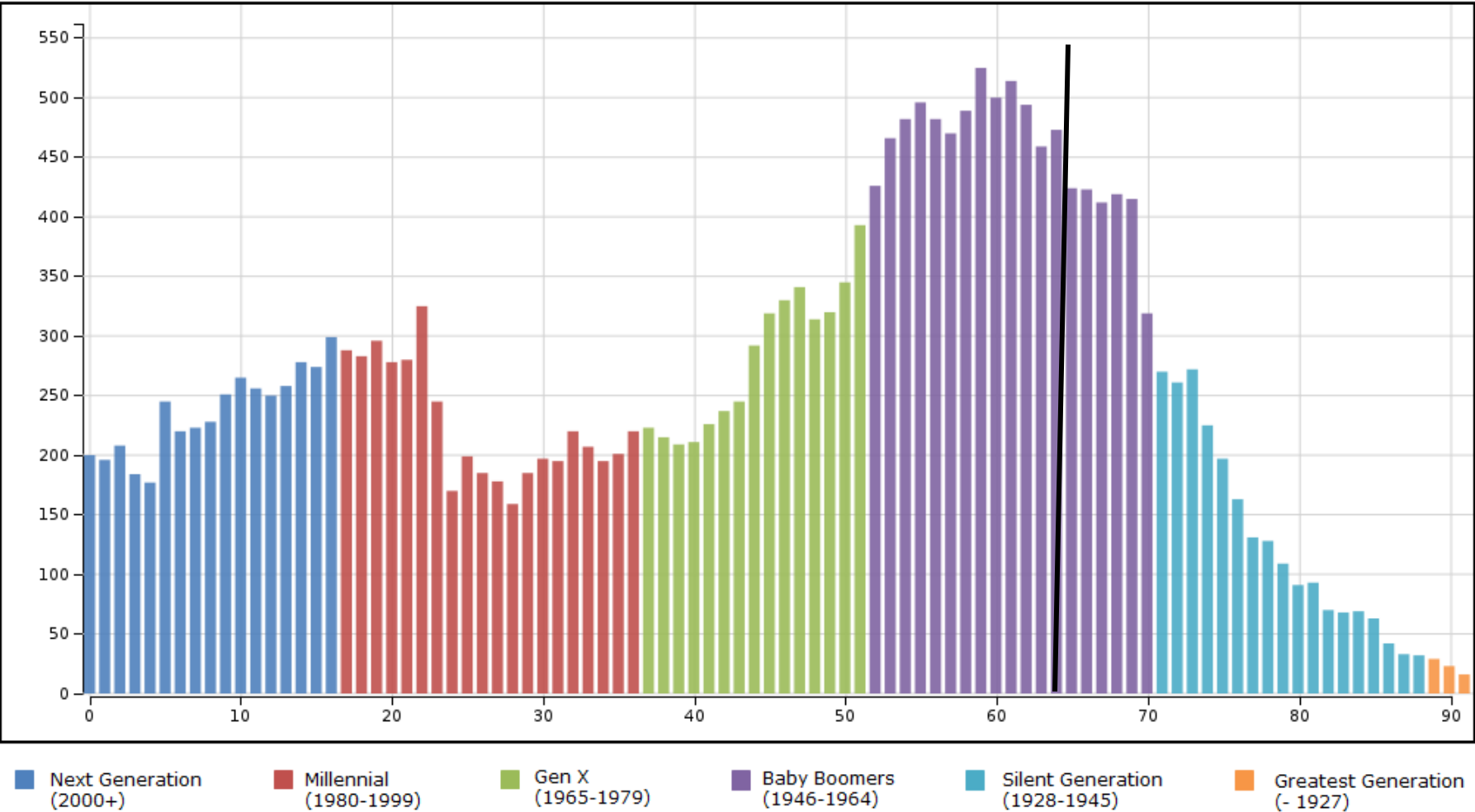
I
M
Age
G
E

Colorado 2016

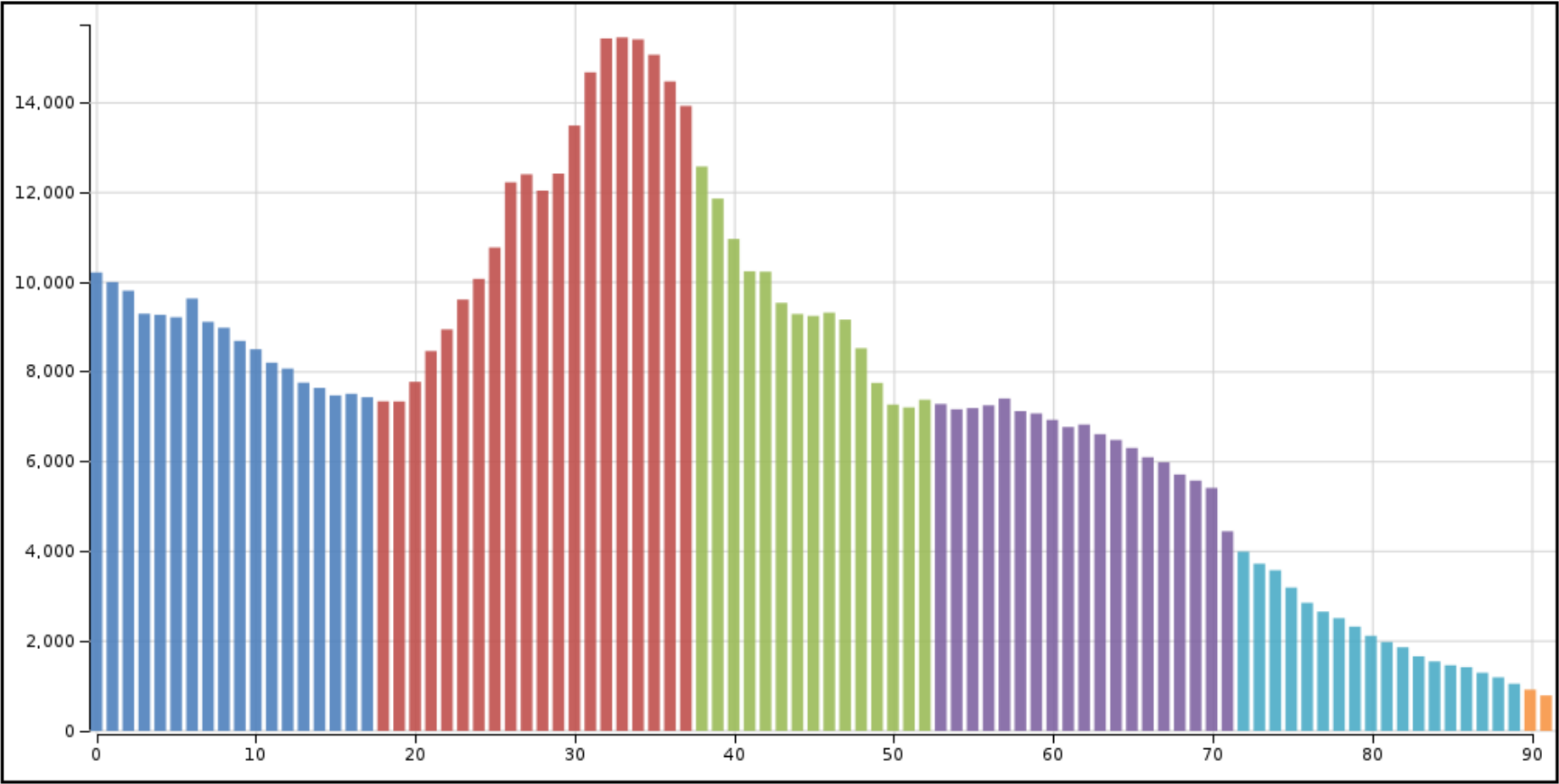


Teller County

2016



Denver County 2017



Next Generation (2000+) Millennial (1980-1999) Gen X (1965-1979) Baby Boomers (1946-1964) Silent Generation (1928-1945) Greatest Generation (- 1927)



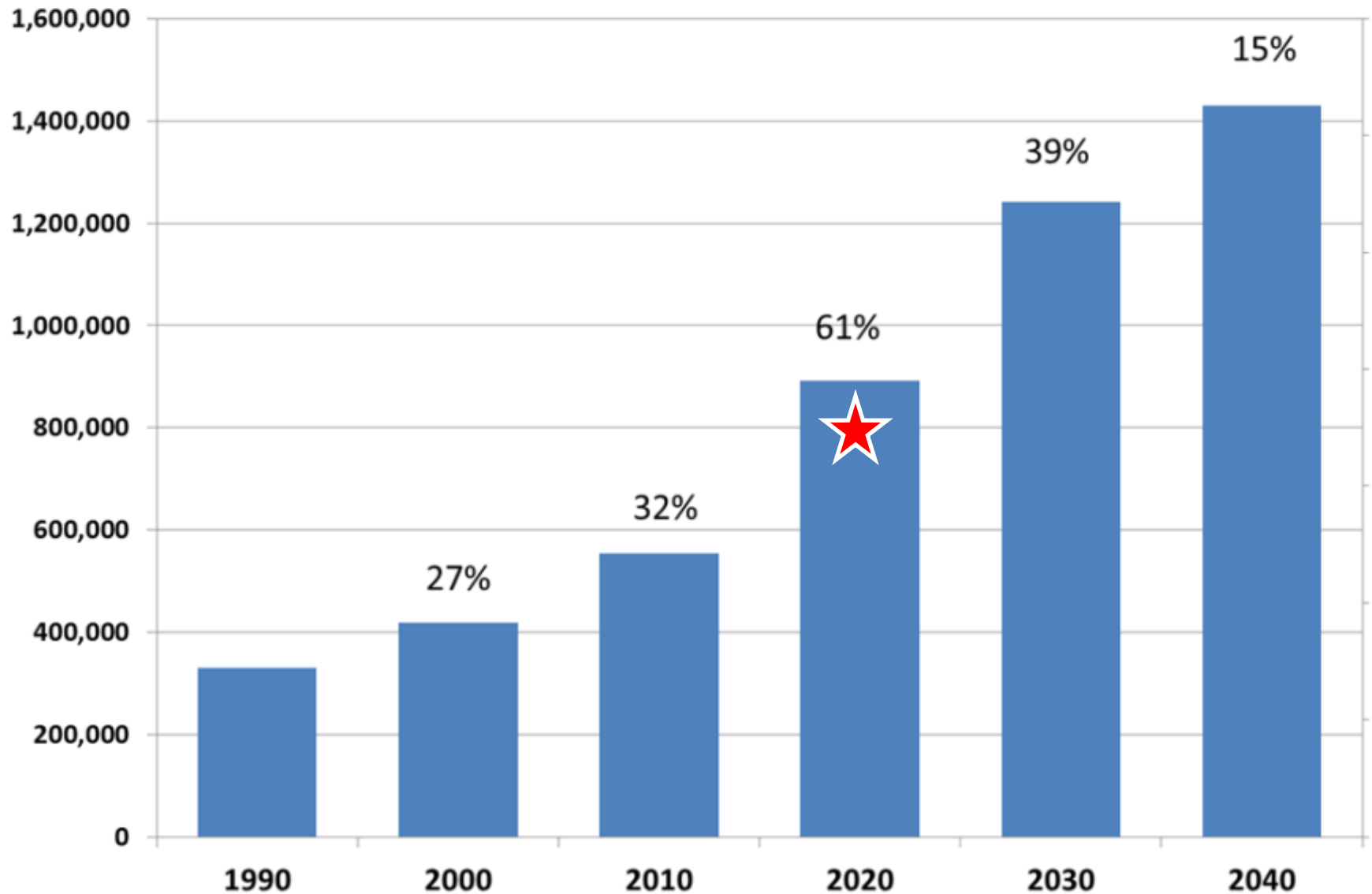
Why Are We Getting Old Fast?

- Currently very few people over the age 65.
 - 6th lowest share of all states in US (13%) in 2015
- Baby Boomers
 - Born 1946 - 1964
 - 1,360,000 Boomers in Colorado (25% of pop. in 2015)
- By 2030, Colorado's population 65+ will be 77% larger than it was in 2015 growing from 719,000 to 1,270,000. (primarily from aging)
- Transition age distribution from “young” to more US average between 2015 and 2030.

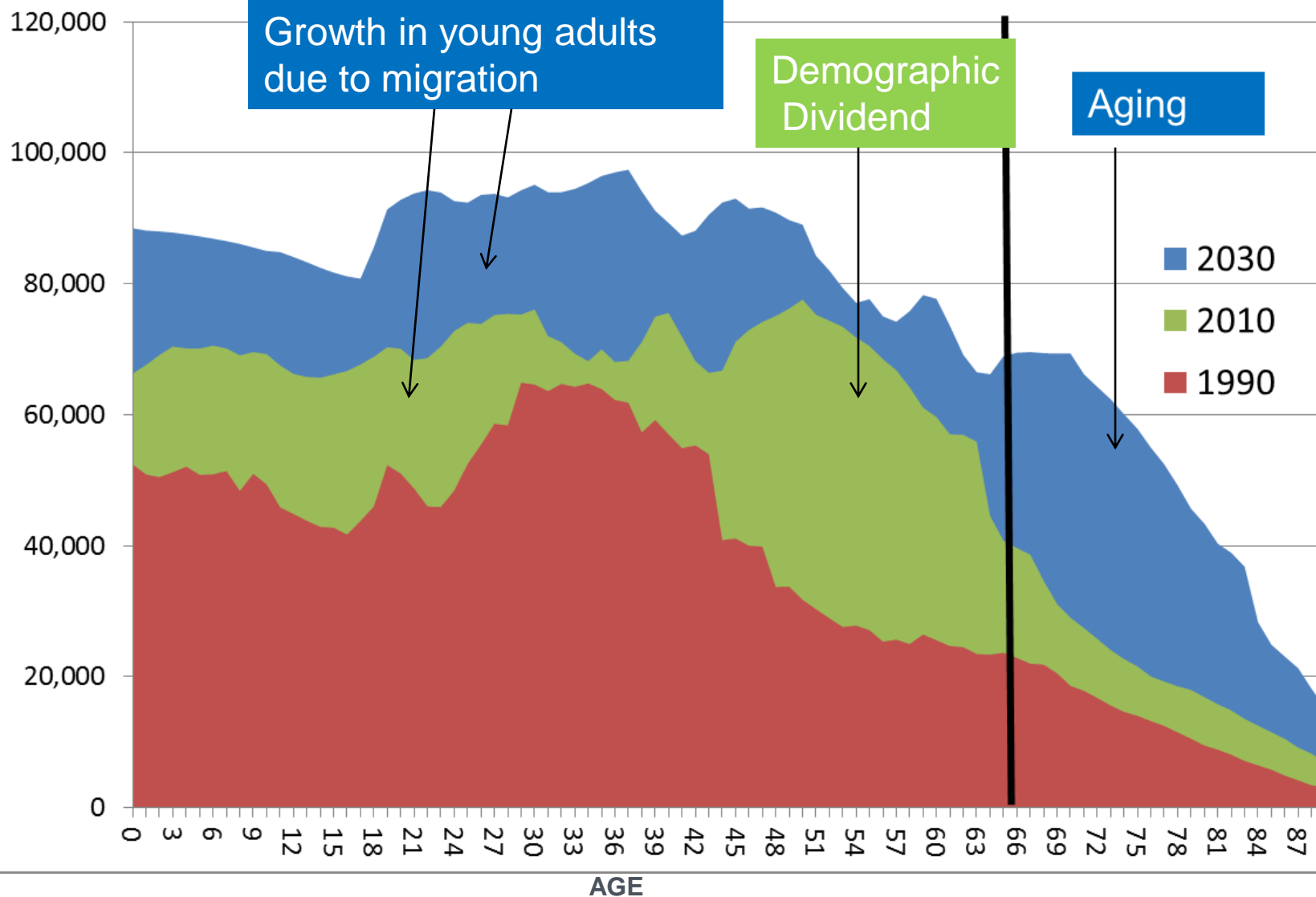


Forecast for the Population 65+ in Colorado

Source: Census and State Demography Office



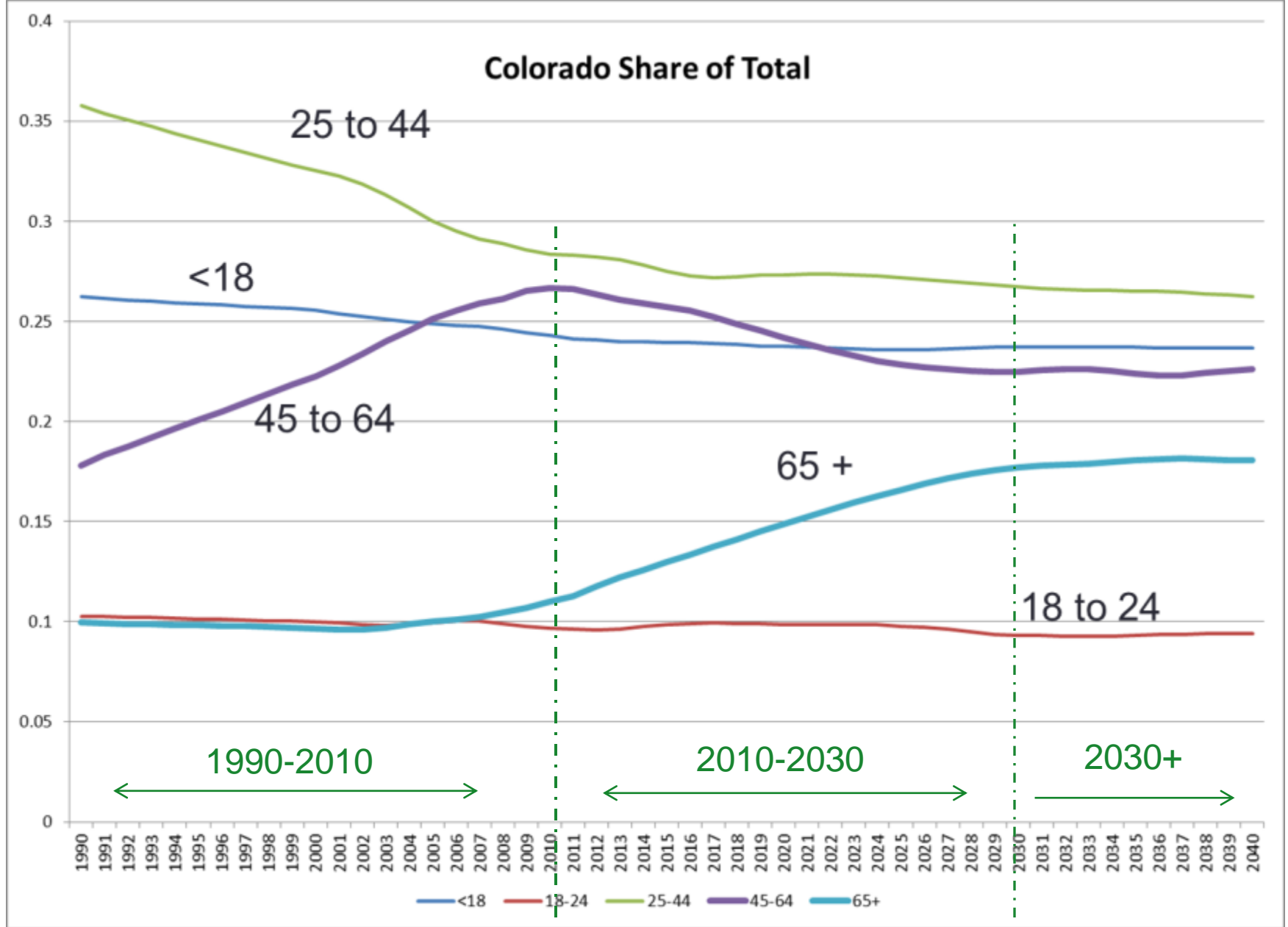
Colorado Population by Age 1990-2030



Aging Issues

- Numbers
- Economic Driver - wealthier depends
 - Impact on occupational mix. Growing at 6% per year
- Labor Force
- Housing
- Income - Downward Pressure
- Health
- Disabilities
- Transportation
- Public Finance - Downward Pressure





I

M

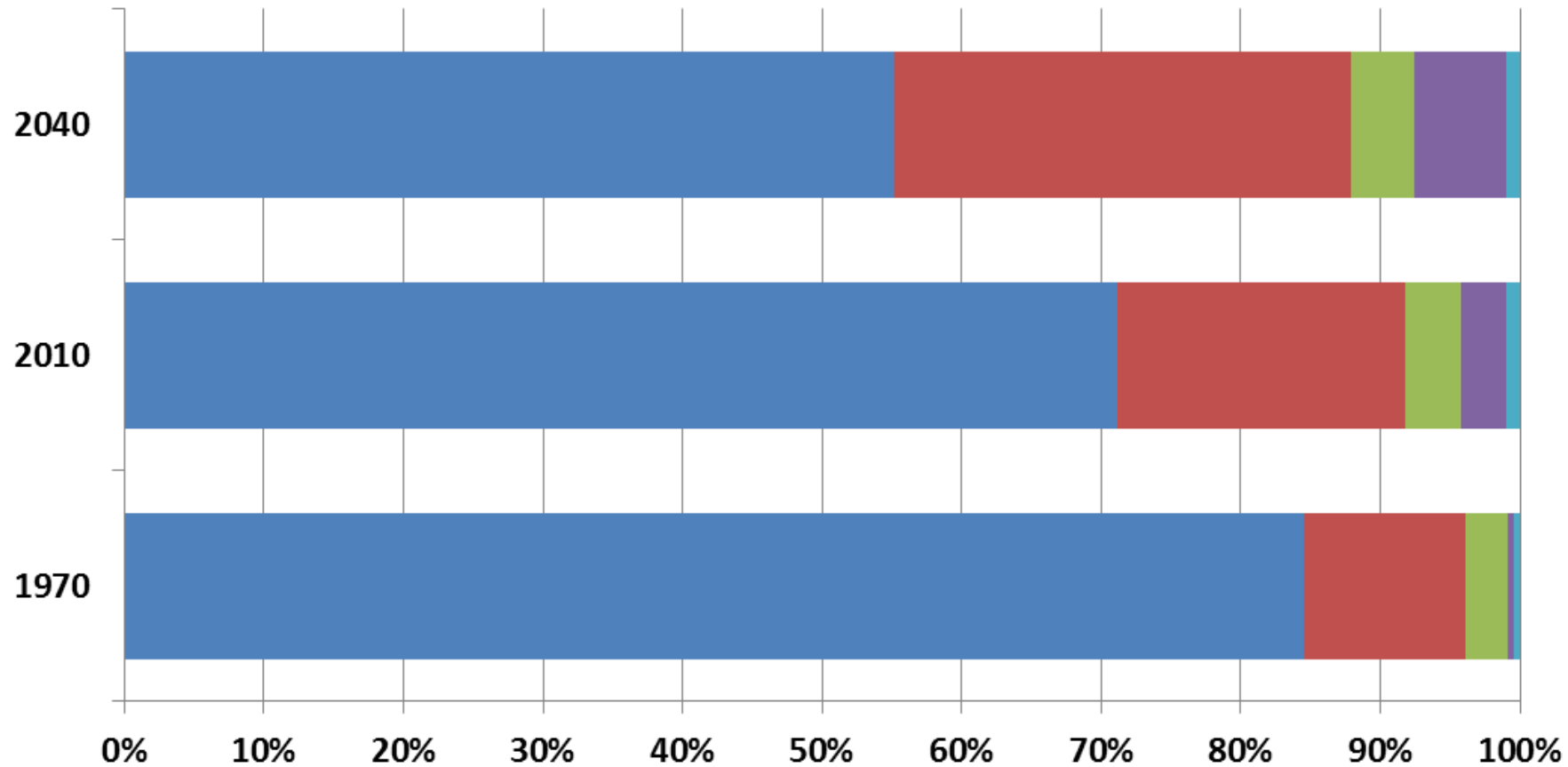
A

G

Ethnicity/Race increasing

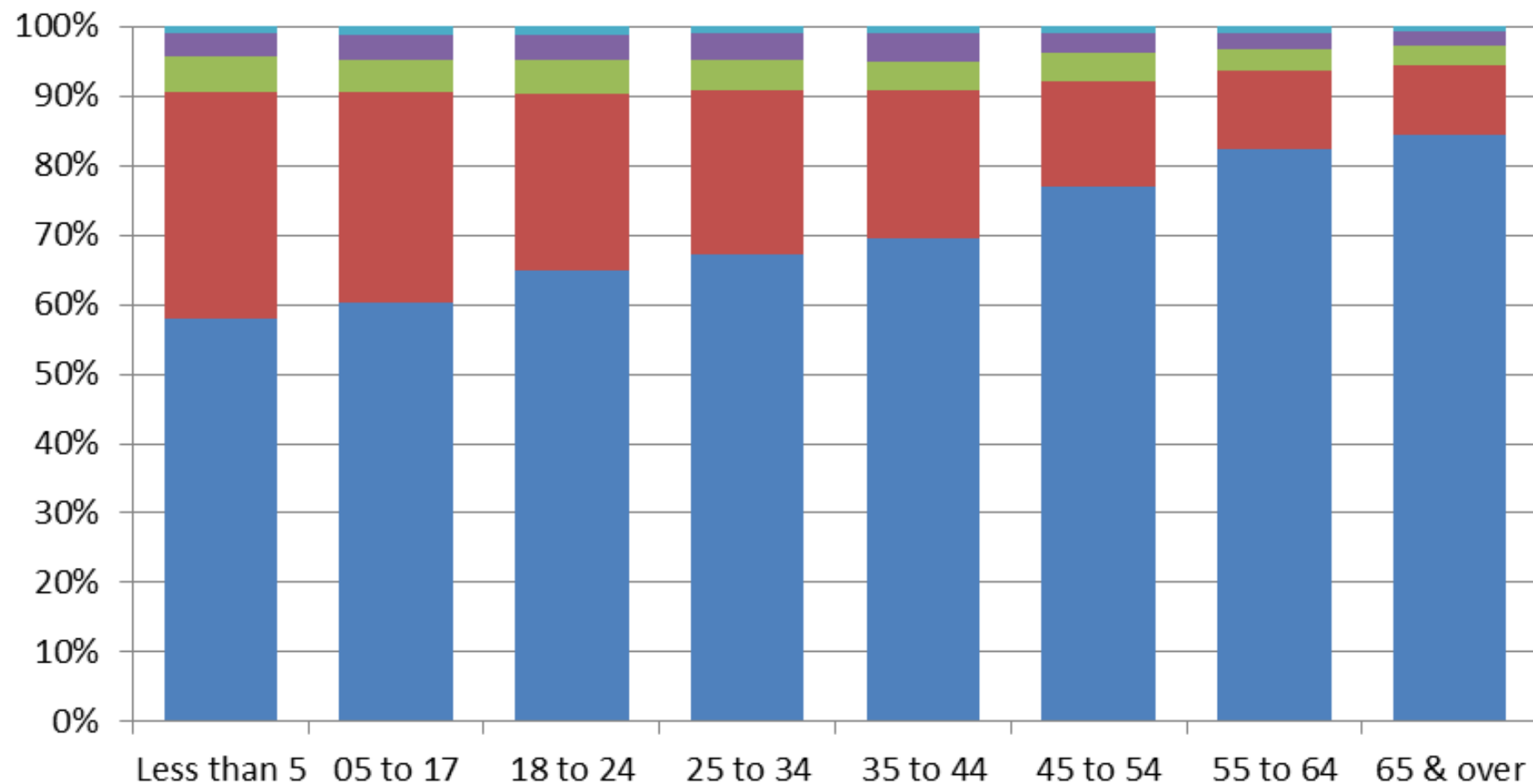
Colorado Population by Race/Ethnicity

■ White not Hispanic ■ Hispanic ■ Black ■ Asian ■ American Indian

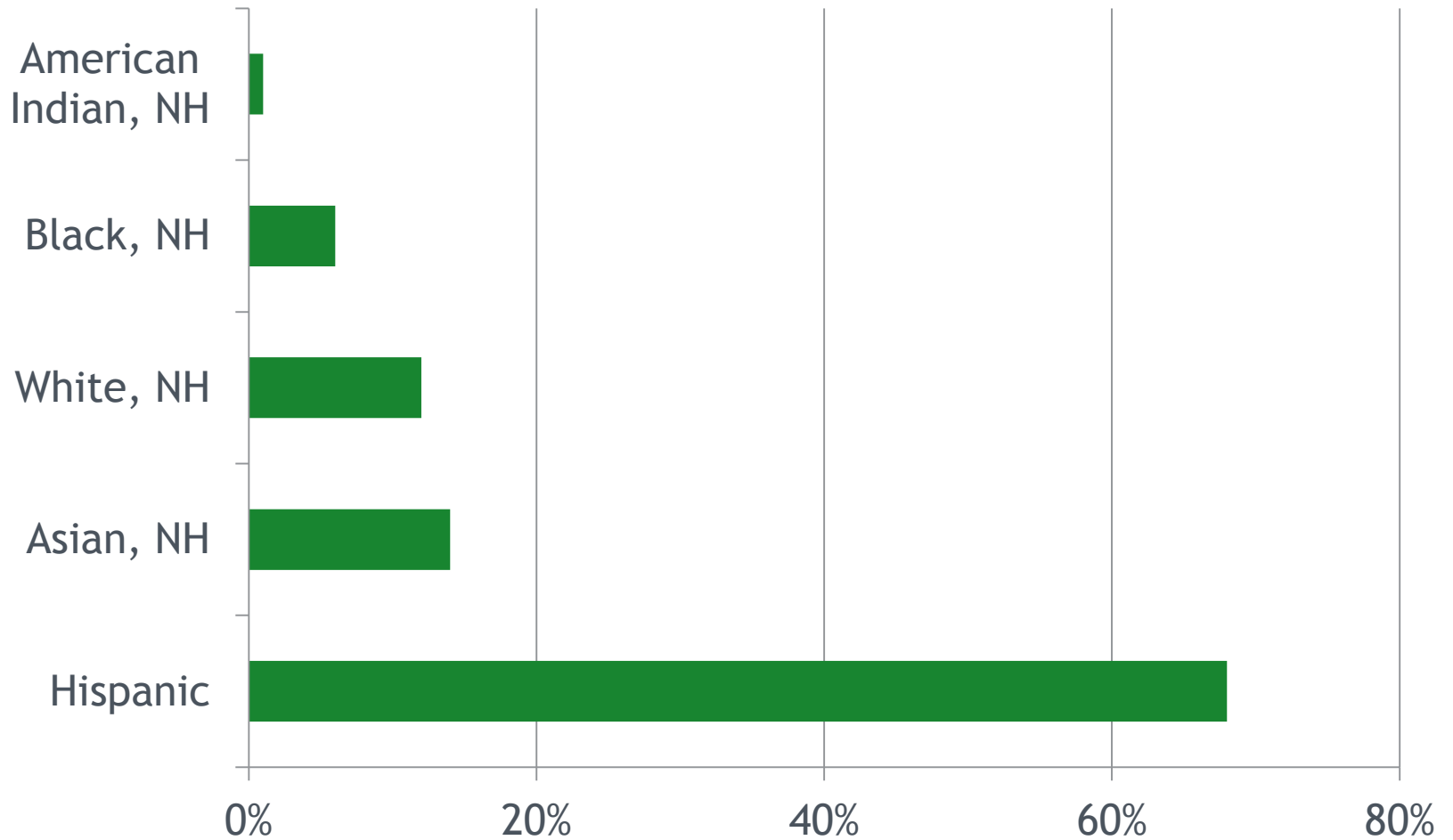


2010 Colorado Population by Race/Ethnicity and Age

WhiteNonHispanic Hispanic BlackNonHispanic
AsianNonHispanic AmIndNonHispanic



Share of Net Increase in Working Age Population, 2015-2020



Income

M

A

G

E

Household Income....its future is demographically challenged.

- Age distributions - “End of “Demographic Dividend”
- Occupational Mix - high and low service
- More race/ethnicity diverse especially at young end but achievement gap is growing as well.
- Household type and size - single and smaller.
- Youth un and under employment - Long term permanent impacts on earnings.



I

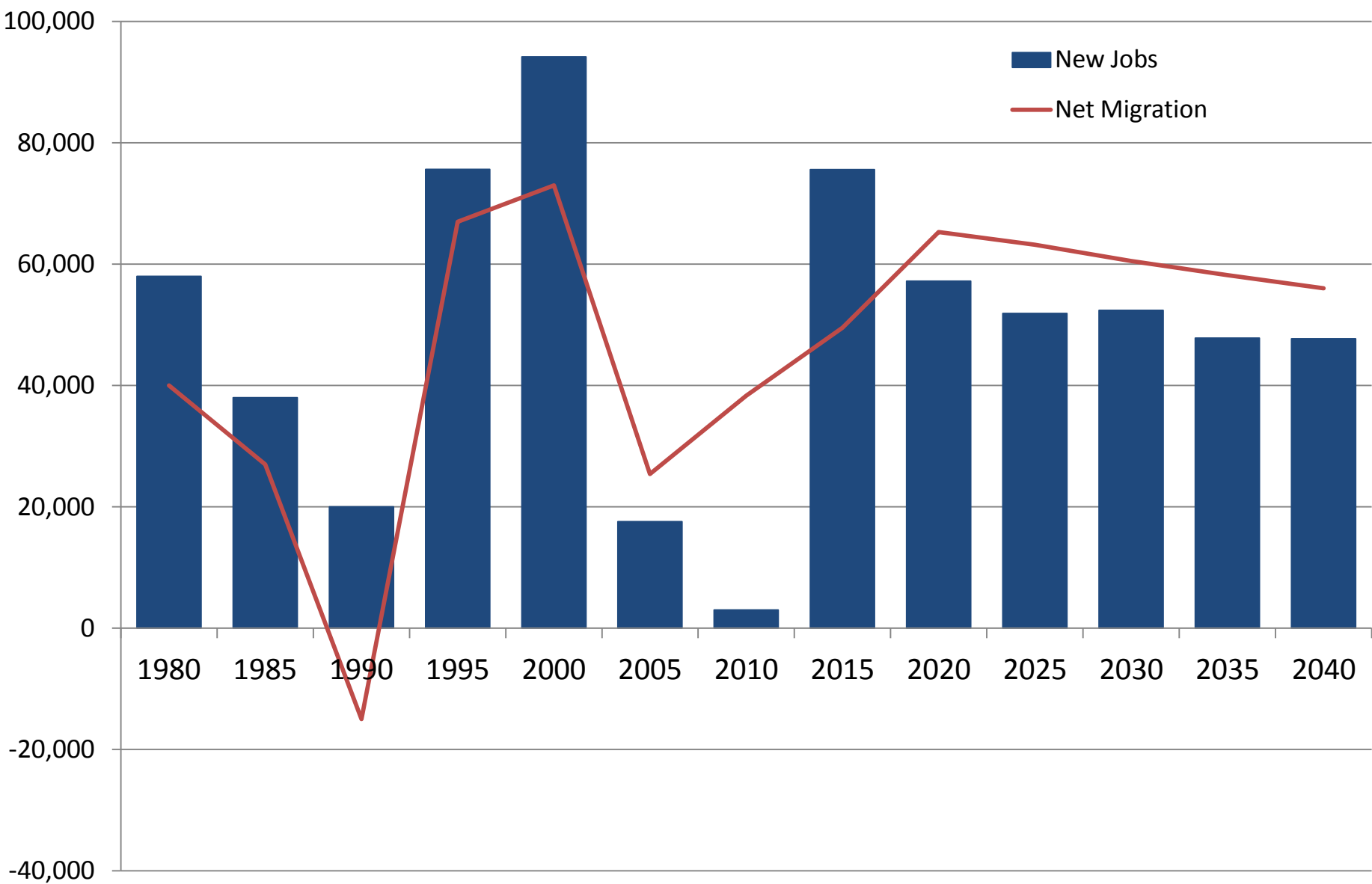
M

A

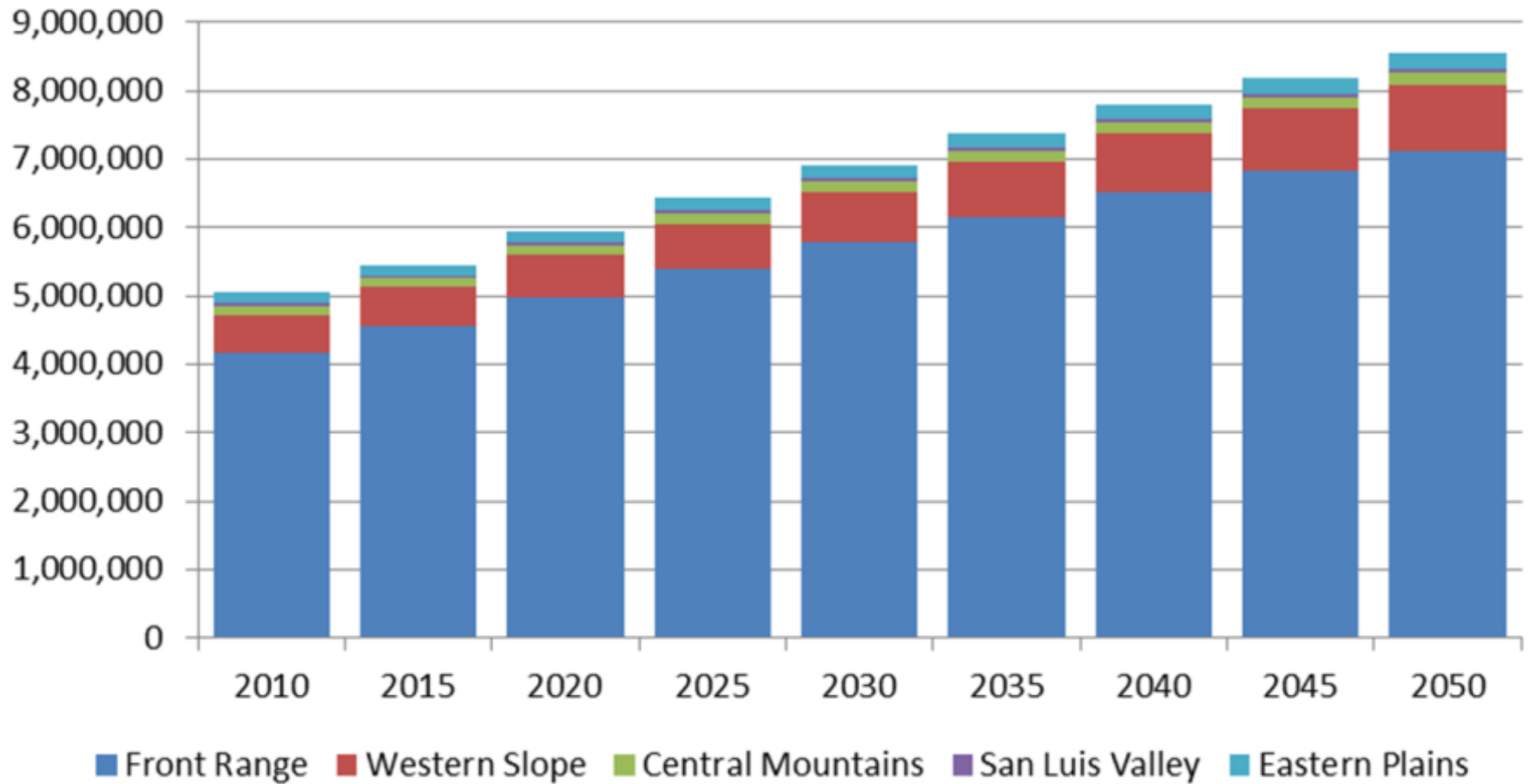
Growing and Slowing

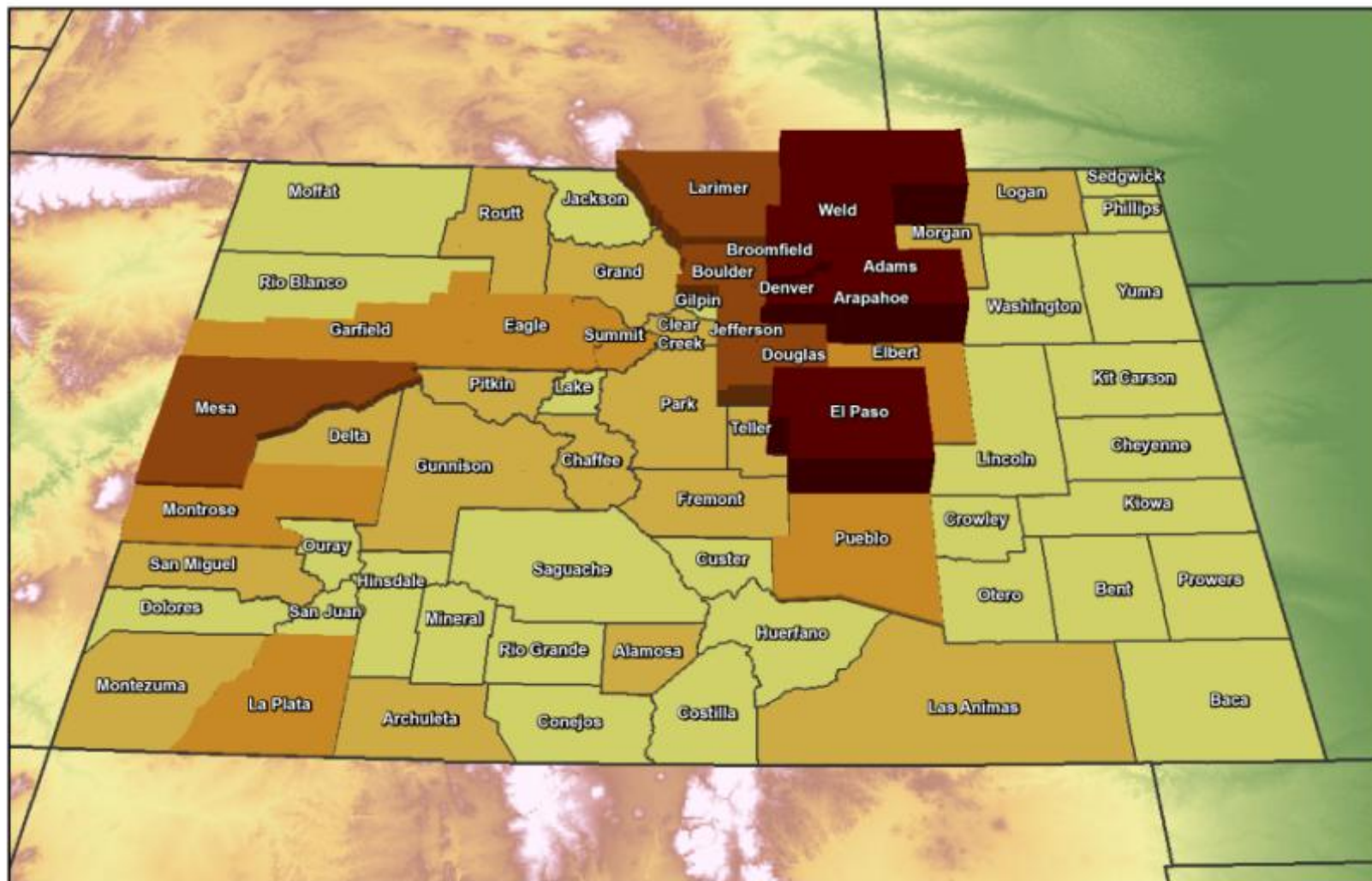
E

Colorado New Jobs and Net Migration



Colorado Population Forecast by Region

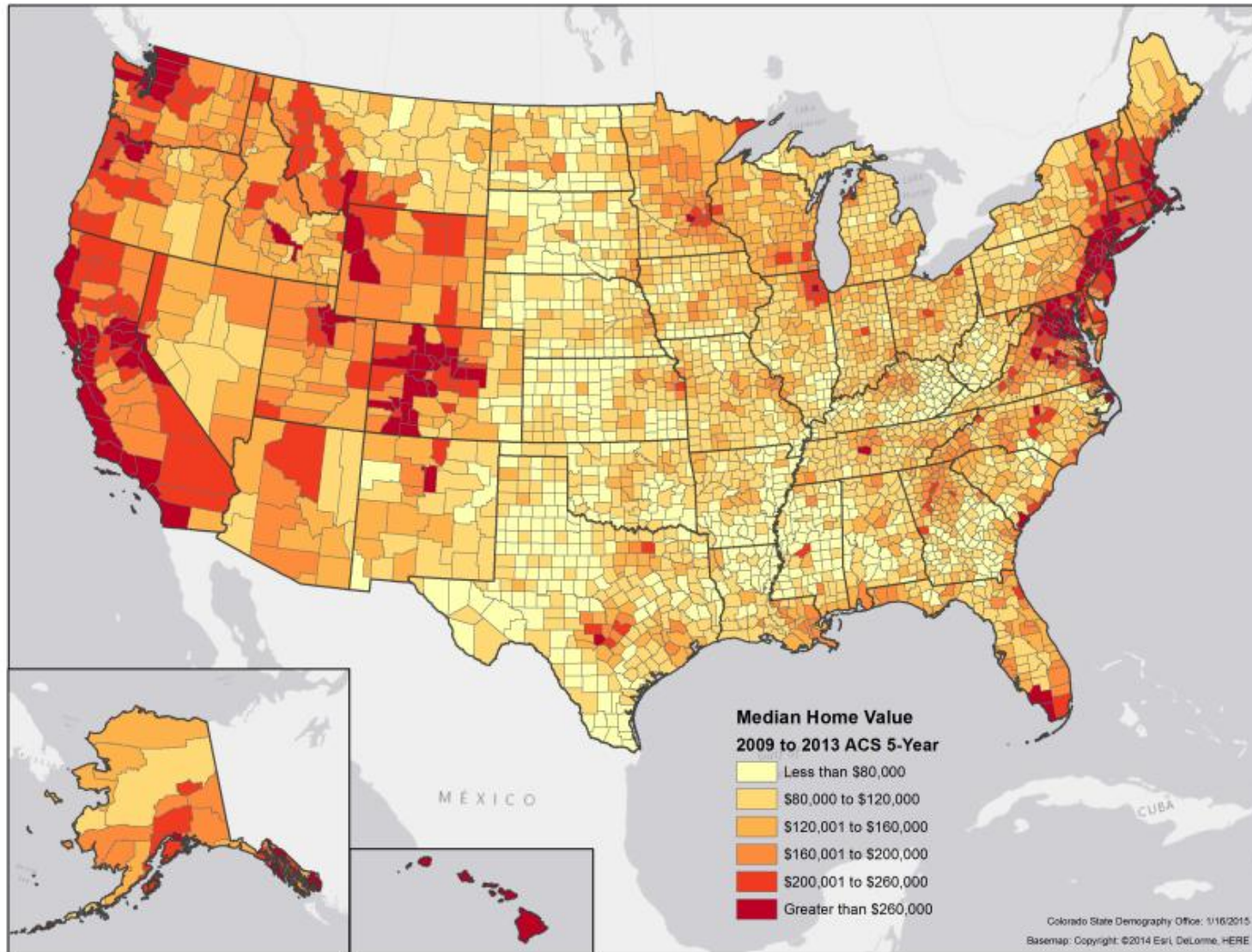




Projected Population Change
2010 to 2040



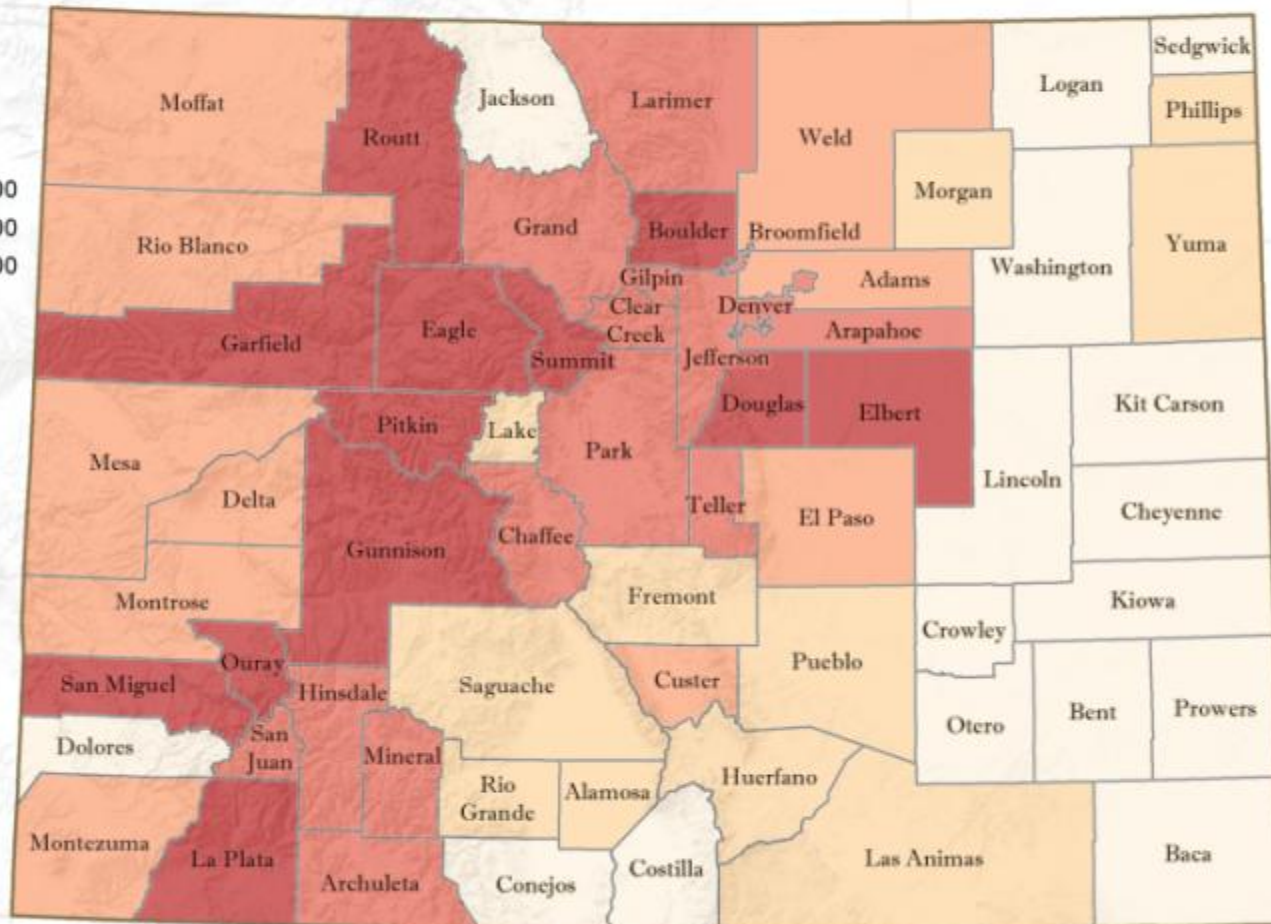
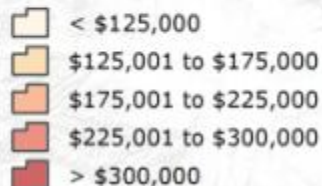
Median Home Value



Colorado: Median Home Value

American Community Survey 2009 - 2013

Median Home Value

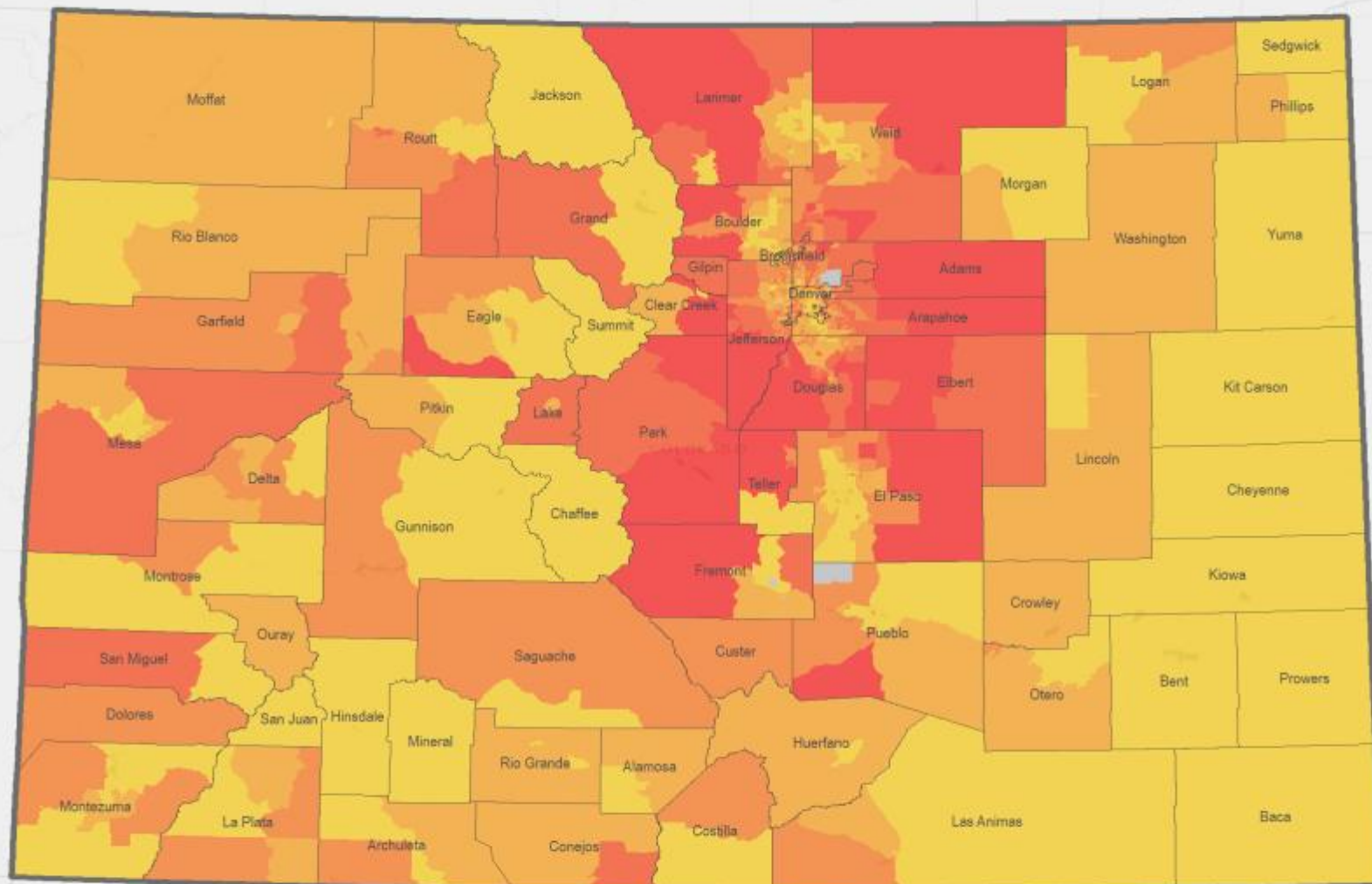


Colorado State Demography Office, 01/27/2015



COLORADO
Department of Local Affairs

Colorado Commuters that Commute 30 Minutes or More



No Commuters

Less than 26.50%

26.50% to 35.99%

36.00% to 45.99%

46.00% to 59.99%

more than 60.00%

Note: Commuter is defined as a worker over age 16 that does not work from home.

Source: American Community Survey 2013 5-year File, Table B08134

Created: 2/27/2015 Colorado State Demography Office

Esri, HERE, DeLorme, MapmyIndia, © OpenStreetMap contributors, and the GIS user community



COLORADO
Department of Local Affairs

To Ponder in the State

Income Challenges - how could downward pressure impact our state?

Migration - how much, where, and can we compete for the best and the brightest?

Aging - we are getting old fast, is the state ready for the opportunities and changes to the labor force, income, industrial mix, housing, etc.

Growth - disparate across the state, what is causing it and what can be done? Can linkages be created between Metro and Non-Metro

Ethnic/race diversity - increasing and aging into labor force. Educational attainment gap continues putting downward pressure on income.



Thank you

State Demography Office

Department of Local Affairs

Elizabeth Garner

Elizabeth.garner@state.co.us

303-864-7750

Demography.dola.colorado.gov



COLORADO
Department of Local Affairs